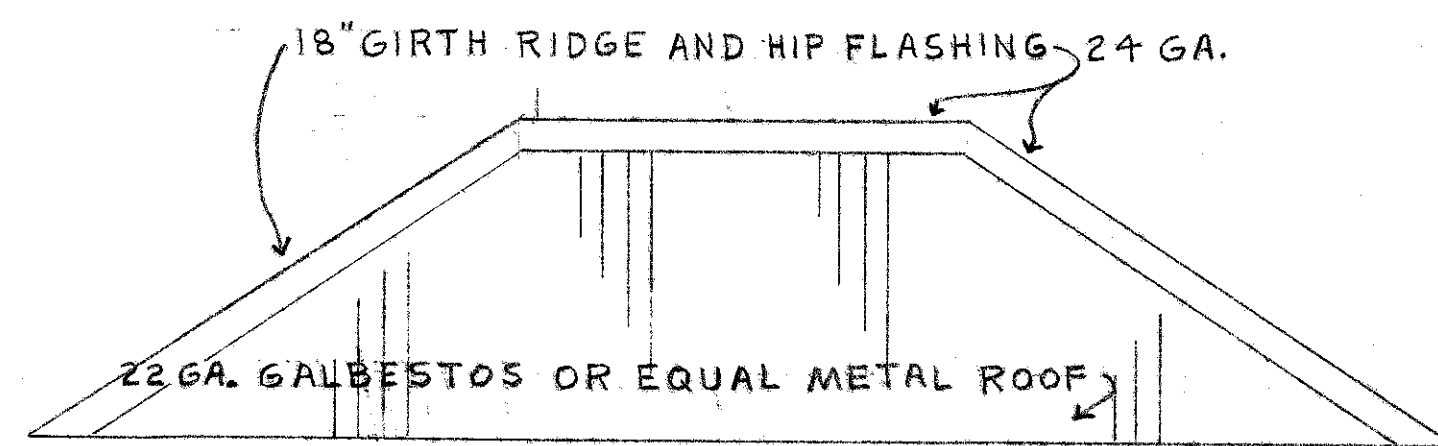
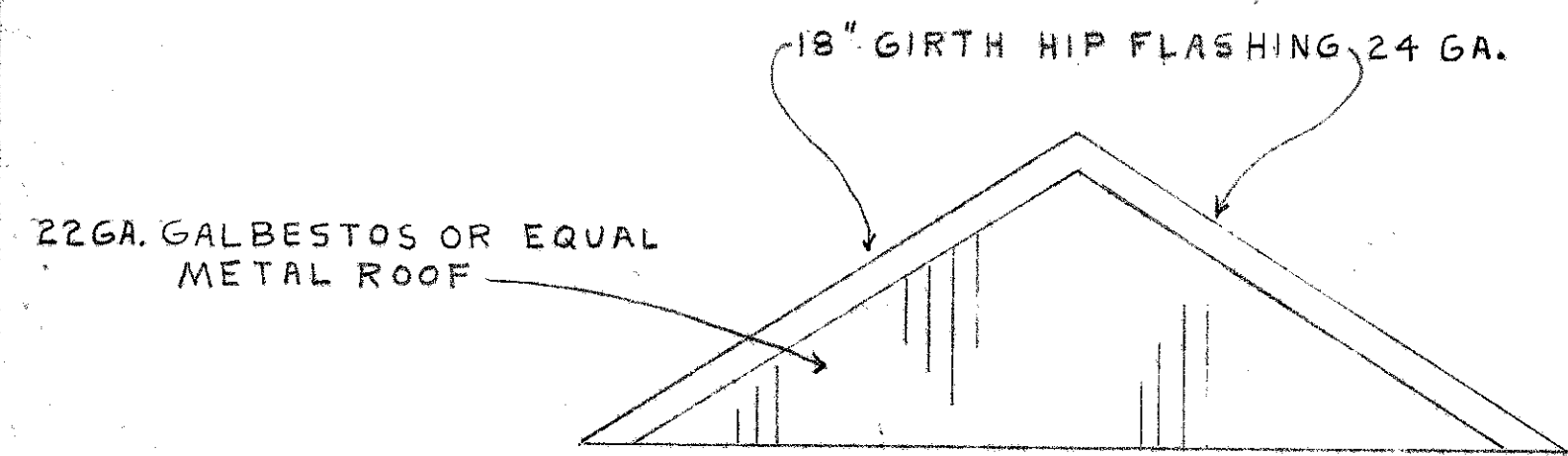


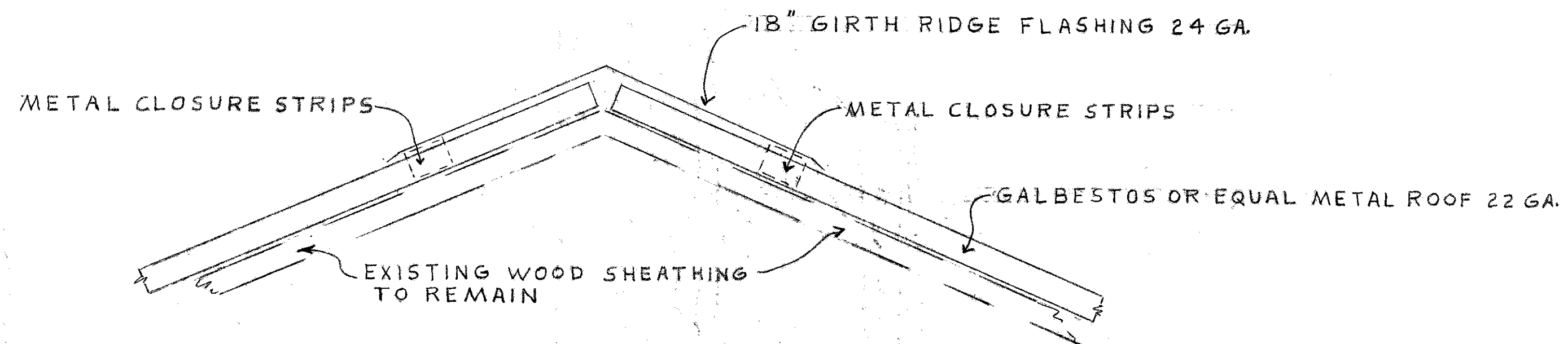
ROOF PLAN OF TYPICAL SHELTER



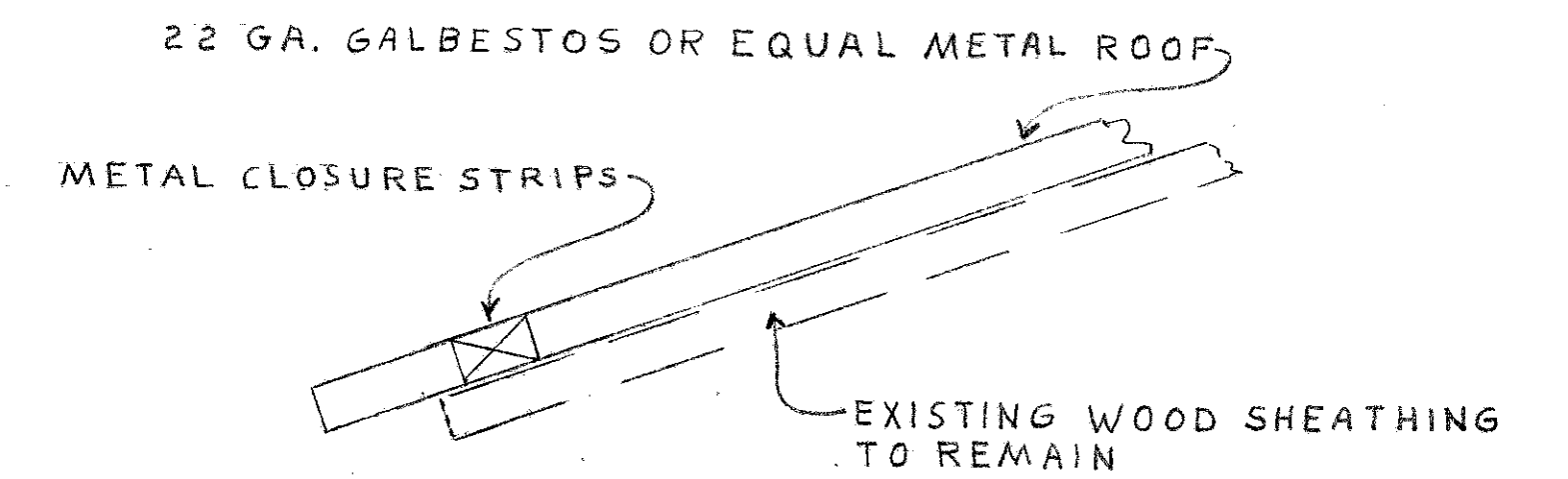
ELEVATION "A-A" OF TYPICAL SHELTER ROOF



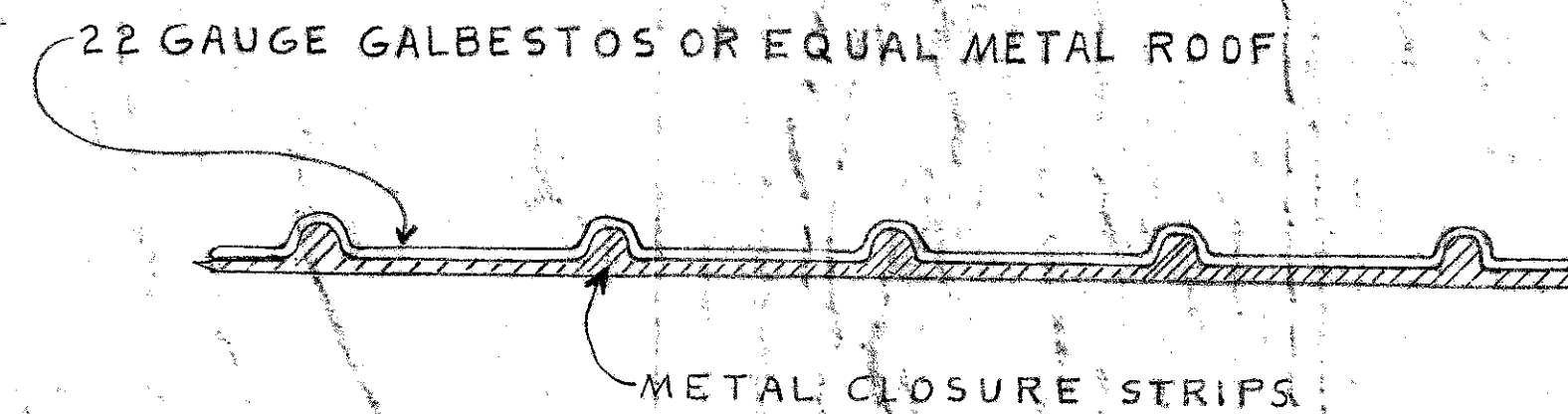
ELEVATION "B-B" OF TYPICAL SHELTER ROOF



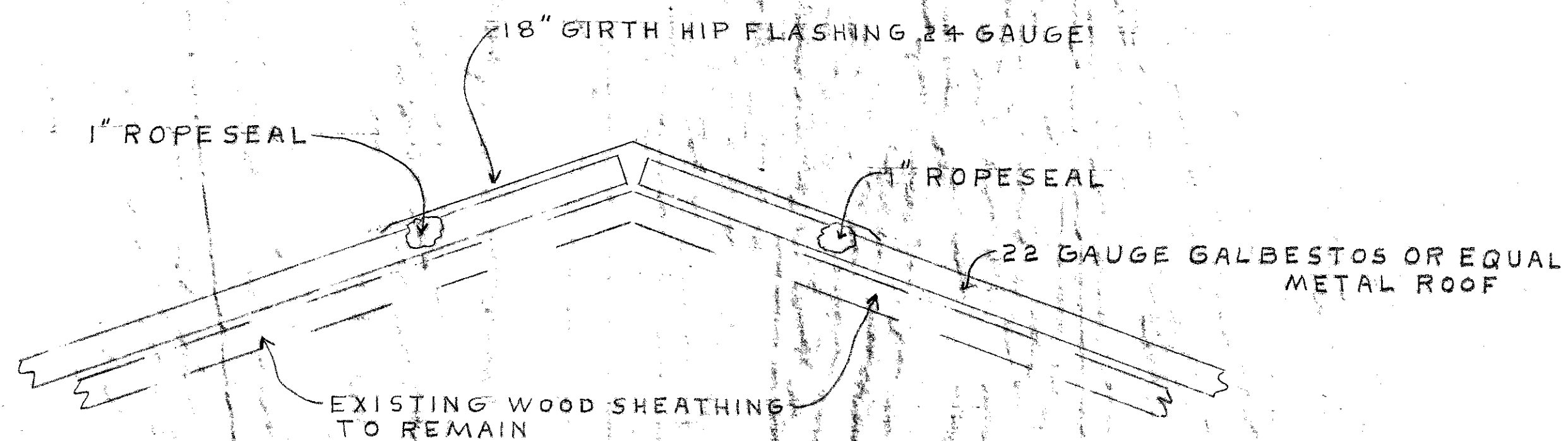
SECTION "C-C"



SECTION "E-E"



VIEW OF METAL CLOSURES AT EAVES



SECTION "D-D"

NOTE: THIS DRAWING IS NOT TO SCALE



APPROVED BY ALLEGHENY COUNTY COMMISSIONERS	APPROVED BY <i>George B. McCannough</i> DIRECTOR OF PARKS - DATE 8/18/64	COUNTY OF ALLEGHENY DEPARTMENT OF PARKS
<i>Jim D. McCallister</i> CHAIRMAN - DATE 8/31/64	RECOMMENDED FOR APPROVAL BY <i>David C. Starr</i> DATE 8/18/64	NEW ROOFS FOR PARK SHELTERS AND BUILDINGS IN NORTH AND SOUTH PARK
<i>John E. McPrady</i> COMMISSIONER - DATE 8/31/64	DRAWN BY <i>David C. Starr</i> DATE 8/18/64	DATE AUG. 18, 1964
<i>Blair Hunter</i> COMMISSIONER - DATE 8/31/64		DRAWING NO. NS-103-64
		SHEET No. 1 of 1

New Roofs - Park Shelters & Buildings in
North & South Parks - NS-103-64 - 1/1/64